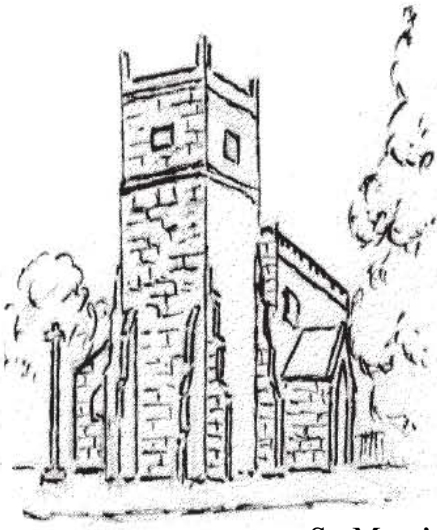
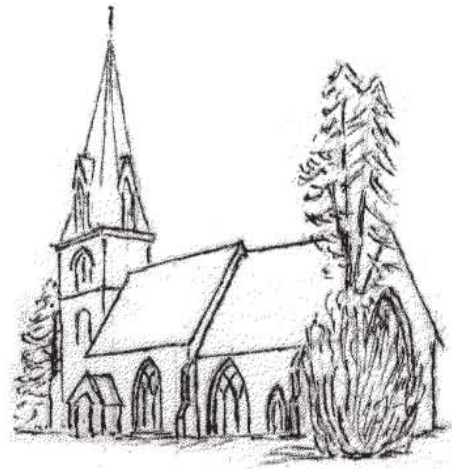


# GROUP MAGAZINE

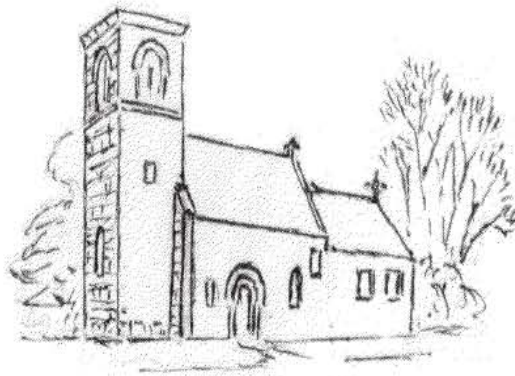
**NOVEMBER  
2010  
50p**



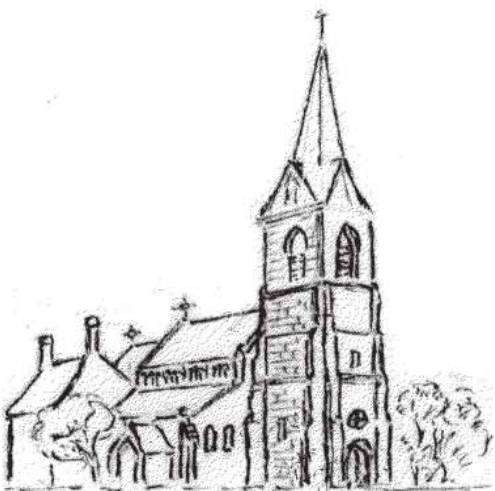
St. Mary's  
Tissington



St. Edmund's  
Fenny Bentley



St. Michael & All Angel's  
Alsop-en-le-Dale



St. Peter's  
Parwich



St. Leonard's  
Thorpe

## S.R.P. QUALITY DECORATORS

*High Quality Painting & Decorating  
for your home & business*



Tel: 01335 390600  
Mobile: 07813 014935  
[www.srpsservices.co.uk](http://www.srpsservices.co.uk)

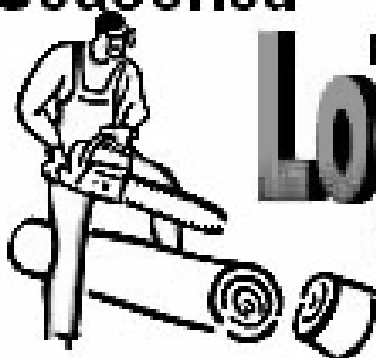
*Tissington Pre-School*  
held in The Bluebell Function Room



Mon, Weds, Fri: 9.30 to 12.30  
(Early Bird Option 9 - 9.30am)  
Tuesday: 9am - 12 noon  
Thurs: 9am - 12 noon  
2 - 5 years old  
Voucher Scheme in use

**Contact: 07817 177405**

## Seasoned By the Load



# Logs

Available now please call  
Simon or Lynne  
on 01335 360370  
or 07966 139459

Landscape  
Maintenance  
Services



We are able to offer the following :-

- Fully Insured Tree Surgery to BS3998.
- Tight Access Excavation Specialists.
- Full Landscaping Service available.
- All areas of Garden Maintenance.
- Beautiful weed free screeded Top Soil any quantity.
- 100% organic weed free soil conditioning compost.
- Wood chip for border mulching.

Landscape  
Maintenance  
Services



Simon or Lynne  
on 01335 360370  
or 07966 139459

## ELECTRICAL PROBLEMS? THEN CALL WYEGARTH ELECTRICAL SERVICES

FOR ALL ELECTRICAL INSTALLATION WORK.  
LARGE OR SMALL CONTRACTS  
REWIRES / EXTRA LIGHTS / SOCKETS  
FREE ESTIMATES / 24 HOUR CALL OUT  
FOR A RELIABLE FRIENDLY SERVICE CALL



01629 814085  
or 07971 786258



## BLENHEIM VETERINARY CENTRE

*CONSULTATIONS BY APPOINTMENT*

AIRFIELD INDUSTRIAL ESTATE  
ASHBOURNE • DERBYSHIRE • DE6 1HA  
Tel: 01335 342111 • Fax: 01335 345857

**ON SITE PARKING**

## **Tributes to Andrew Robinson**

On Monday 27th September we gathered at St Peter's Parwich, to celebrate the life of Andrew Robinson.

Andrew was a truly remarkable man. As I set out into my first few months here, I regularly sought his wisdom and local knowledge. I found him, always happy to listen, share in the laughter and when necessary, point me towards the “half full glass”. I didn't find it hard to imagine him as a successful Head teacher, he was such a natural, gentle, leader of people. There are some folk in this world that everyone loves and Andrew was such, universally loved and respected.

My strongest memory is only from a few weeks ago, sitting studying the Bible together. As we read and prayed and laughed and chatted, Andrew's love for the Bible and love for God shone through. Though I knew him only briefly, I could see that his Christian faith was central to the way he lived his life and bravely faced his death. He knew, that in God, death is not the end.

Andrew's funeral was a wonderful celebration of his life. It was a privilege to be there. Every death leaves an emptiness and I've come across so many that miss Andrew. I thank God for Andrew and pray that God will comfort and hold Rachel and the family.

*Revd Andy Larkin*

The loss our colleague, Andrew Robinson, has caused much sadness in our five villages and beyond. He was a respected and trusted friend and is greatly missed by us all. Andrew was a vital member of Parwich village, taking a full interest in all that went on in community life and using his many gifts and talents for the benefit of others. His deep care for people, his approachability, his sense of fun, his wise counsel, and his open hospitality – always shared so efficiently with Rachel – were always appreciated. As a former headmaster he was especially gifted with children and in teaching the Christian faith to young people, and as a Lay Reader in our United Benefice his teaching expertise and lively leadership of our worship was uplifting, and gave us all so much encouragement. He showed great courage and faith facing terminal illness and death. We thank God for him, and we continue to remember Rachel in our thoughts and prayers.

*Faith Hanson and Ros Hunt*



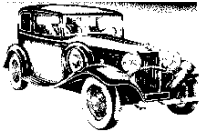
## *The Bluebell Inn and Restaurant*

**Buxton Road, Tissington, Ashbourne.**

Food served between 12pm & 9pm (8.30pm Sundays)

Disabled Access & Facility. Function room available for weddings, parties etc.

Tel: 01335 350317

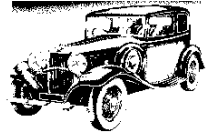


## **KEN PEARSON CAR CONSULTANT**

Buying or selling, I can help. Ebay Sales negotiated.

Car Auction buying made simple.

Tel 01335 350499 or 07716 123788 • Email: kennethjpearson@aol.com



## **H. LEE & SON**

**FUNERAL DIRECTORS**

Timber Merchants, Timber Cut & Planed to Order

**BELLE VUE ROAD, ASHBOURNE. TELEPHONE: 342530 or 370166**

## **LANDSCAPING, GARDEN DESIGN & RENOVATION**

*~ from planning to planting ~*

**Contact Pamela & Tim James: 01335 324622**

**Delia  
Pegg**

Dog Walking • Pet Care Services • Dog Grooming

Flowers for all Occasions

Tel: 01335 390758 or 07773 487882



**Blackberry Barn**

**Handmade Country Style Candles & Gifts**

**Tel: 01335 390552**

**[www.blackberrybarn.co.uk](http://www.blackberrybarn.co.uk)**



**TO PLACE ADVERTISEMENTS,  
PLEASE CONTACT MARY WILFORD  
01335 350302**

On October 17th 2001, less than one month after the terrorist attacks on the twin towers of the World Trade Centre and the Pentagon building in Arlington, Virginia; British armed forces joined their US colleagues entering into Afghanistan as Operation Enduring Freedom commenced. As I write this article, the BBC News website tells me that 322 British soldiers have been killed, to date, in this nine year conflict.

On March 20<sup>th</sup> 2003, British troops entered Iraq as part of the multinational task force under Operation Iraqi Freedom. Our troops finally left Iraq last year, but 179 were killed during the Operation. Of course, for every fatality, scores more have been injured and seen their lives changed as a result.

Political arguments continue as to whether war was the right response to the immediate terrorist threat. It would seem that both conflicts have been longer and tougher than our Government expected. For our troops, these political arguments must be deeply frustrating. Theirs was a logic of sacrifice and obedience. They were told to go and fight and so they did, hoping that this would make our country safer and that by risking their own lives, others would be spared the horror of conflict. Perhaps to all our shame, in 2007 the Royal British Legion felt the need to launch its' Honour the Covenant campaign. Aimed politically, it asked the Government to honour its' lifelong duty of care to members of the armed forces. The campaign also succeeded in reminding all of us of the personal legacy war was leaving with each of our soldiers.

Sometimes conflict may be the only road to real peace. We hope and pray that this will be the eventual outcome from each of these two wars. All conflict comes at a price and many from our country have paid that price, over many years, to bring us the level of peace and prosperity we enjoy.

On Sunday November 14<sup>th</sup> we have a chance to say thank you and to reflect on what we ask of our armed forces. Details of our Remembrance Day services can be found on the last page of this magazine. I'd like to take this opportunity to invite you to come along.

Wishing you Christ's peace,

*Andy*

Revd Andy Larkin

<i>Copy Deadline for December/January Magazine: 25<sup>th</sup> November, 2010</i>
--



## WHITE PEAK FARM BUTCHERY *MEAT AT ITS PEAK*

The Old Slaughterhouse  
Chapel Lane, Tissington  
Nr. Ashbourne, DE6 1RA  
**Tel: 01335 390300**



## D & G Woodwork

CARPENTRY & JOINERY  
SPECIALIST

SMALL JOBS UNDERTAKEN

David Goldstraw  
01335 390370 or 07749 629710

## Open your garage door at the touch of a button.....



**Remote Openers**  
To old or new doors

+ New Doors & Gates

+ Repairs

+ Free  
Quotations



For a brochure or quote phone:

**01335 342086**

## THE COACH & HORSES

Fenny Bentley, Nr. Ashbourne.

*A friendly 17<sup>th</sup> century coaching inn,  
open all day, every day.*

*Good food, good beers and  
warming log fires.*

**Telephone: 01335 350246**

## ASHBOURNE secretarial and printing services

*A traditional secretarial service  
combined with modern print  
technology*

**Tel: 01335 300445 • Fax: 300485**

Ashbourne Business Centre, Dig Street, Ashbourne  
[www.ashbournesecretarialandprintingservices.com](http://www.ashbournesecretarialandprintingservices.com)

Email: [sonya.abc@btinternet.com](mailto:sonya.abc@btinternet.com)

Your local distributor for  
AGRICULTURAL  
FARM & ROAD FUELS  
LUBRICANTS  
DOMESTIC HEATING OIL



**PEAK OIL PRODUCTS (NORTHERN) LTD**

SHOTTLE STATION, COWERS LANE  
BELPER, DERBYSHIRE. DE56 2LG

**TEL: 01773 550417**

Fax: 01773 550481

## STURSTON FOR SERVICE

**For ALL your Motoring  
Requirements**

**01335 342512**

[www.sturstongarage.co.uk](http://www.sturstongarage.co.uk)

Sturston Garage Limited  
Airfield Industrial Estate, Ashbourne

## JOHN HAMBLETON

BUILDING & ROOFING

STONE MASONRY

EXPERIENCED IN WORKING WITH  
LOCAL MATERIALS

**TEL: 01335 350574**

## Alsop en le Dale

### Altar Flowers

7th and 14th November	Mrs B Fentem
21st November	Mrs L Woodroffe
28th November	Mrs C Adams

### Readers

Mrs C Gordon  
Mrs C Duffell

## Fenny Bentley

### Altar Flowers

November	7 <sup>th</sup>	June Pearson (Remembrance Sunday)
	14 <sup>th</sup>	
	21 <sup>st</sup>	
	28 <sup>th</sup>	

### Cleaning

June	Anne Etches
	Steph Baldwin

### Harvest

What a fantastic harvest event. Thanks to all who helped make it happen and thank you to everyone who turned out. We raised £268 from the auction and £165 from the collection.

Revd Andy Larkin



## **Breast Cancer Care – Ben Nevis Challenge 2010**

On Friday 1 October I travelled up to Glasgow and then on to Fort William for the weekend in order to take part in the Breast Cancer Care Ben Nevis Challenge. We made an early start on the Saturday morning to travel to the Ben Nevis Visitor Centre where we were to begin our climb. In total there were 87 people taking part, many of whom had travelled from all over the country, some in groups and pairs, but others like myself had signed up individually to do the challenge. Many people had very personal reasons for being there and all felt very passionate about their support for the charity. We were divided into 4 groups, each with 2 trained and experienced guides who kept us in our groups, they offered us support, encouragement and for those with sore feet, blister plasters! Everyone found the climb up Ben Nevis strenuous and challenging, the pathway is often rugged and rocky but with much encouragement from our guides we all made it up to the top. We were very fortunate with the weather on the way up the mountain, we enjoyed some spectacular scenery and were able to take some photos during our very brief stops. Unfortunately as we reached the rocky peak the weather turned wet, cold and very windy, there was just time for brief photos before we started our very tricky way back down the mountain, and many found this harder than going up! By the time we reached the bottom we were all feeling pretty exhausted and thrilled that we'd actually conquered the mountain! We had been walking for a total of 11-12 hours so we were ready for a hearty meal when we got back to our hotel.

We had been fortunate this year in being able to complete the challenge, as we were told that in the previous 2 years, it had not been possible for the groups to reach the peak of Ben Nevis due to the inclement weather and wind speeds of 85 mph. However, the wind speed for the day of our event was only forecast to be around 45 mph so our guides considered that conditions were safe for us to continue the challenge this year.

In total I will have raised over £1000, a large amount of which was raised by doing a bag-packing day at Sainsburys in Ashbourne on Saturday 28 August. I would like to say a very big 'thank you' to the Manager and staff who showed us enormous kindness and support during our day bag packing and I would also like to thank my family and friends who allowed me to 'twist their arms' to help on that day, and last but not least, to the customers of Sainsburys who were so generous with their donations.

I would also like to thank the many other friends and work colleagues who kindly sponsored me to do the challenge. If anyone would like to make any further donations then they can do so by visiting my web page at [www.justgiving.com/Brenda2010](http://www.justgiving.com/Brenda2010)

**Brenda Kirkham**



# Parwich

## ANDREW ROBINSON 1937-2010

*To all our friends in Parwich and the other Parishes*

*How can I find words to thank you for all the love and comfort that you have shown to Andrew during his illness, and now to me and my family as we face life without him.*

*Your wonderful cards, phone calls and offers of help brought Andrew much happiness and encouragement as I took them into hospital each day. He just loved Parwich, and all of you, and our years of retirement here were some of the happiest of our lives.*

*It was so comforting that he knew of the love that surrounded him. We just wish that he could have seen everyone at work in the Church getting ready for the funeral service. Thank you for all the beautiful flowers and foliage you brought from your gardens, and all the time and skill you gave so freely to make the Church look so beautiful. My family and I found it very moving to see you all at work and hear the shared memories of Andrew's life here.*

*And now the healing goes on as I receive your loving messages of sympathy. Two passages in the Bible were very special to us - Jesus said, "I am the resurrection and the life; they who believe in me shall never die" and "Nothing will be able to separate us from the love of God that is in Christ Jesus our Lord".*

*Rachel Robinson*

---

## CHRISTMAS TREE FESTIVAL AND CHRISTMAS FAIR

This year we will holding our Xmas Tree Festival from 18<sup>th</sup> December. Please let us know if you would like to book and decorate a tree.

The **Christmas Fair** will be held in Church on Saturday 18<sup>th</sup> December from 11am-3pm. We would be very grateful for any offers of cakes, bric-a-brac, and any suggestions/offers of help for stalls.

Last year we had a very successful Fair; hopefully we can make this one even better. See you then!

Martin Compton 390 529 Helen Pitts 390 362



## CHORAL CLASSICS FOR REMEMBRANCE

SATURDAY 13<sup>TH</sup> NOVEMBER 7.30pm in St Peter's Church, Parwich

The Choir of St Mary's Church, Nottingham, directed by John Keys.

The "Midland's finest choir" is coming to Parwich to present a programme of favourite choral works, including pieces by Byrd, Stanford, Harris, and a complete performance of Fauré's Requiem.

Tickets, including wine and refreshments £7.50, children £1. Tickets available on the door, from Natural Choice in Ashbourne, or reserve on 01335 390529.

Further information, audio programme on the Fauré Requiem, and videos on [www.ashbournechurches.org/concert](http://www.ashbournechurches.org/concert)

(Raising funds for Help the Heroes and Parwich Church Restoration Fund).

*Under the leadership of John Keys, the Choir of St Mary's Church is recognised as one of the region's finest. Renowned for its versatility and wide repertoire it performs music from plainsong through to world premieres. As well as performing music for liturgical use, the choir regularly undertakes large scale works which recently have included the Bach passions and Verdi's Requiem.*

*The choir sings three times a week: at Wednesday Evensong, Sunday Eucharist and Sunday Evensong. In 2002 a choral scholarship scheme was launched and has succeeded in attracting some of the most promising young singers from both Nottingham universities.*

*Broadcasts include Sunday Half-Hour and In Praise of God for BBC World Service, Radio 4's The Daily Service and Sunday Worship, BBC Radio Nottingham's Annual Carol Service and BBC 1's Songs of Praise.*

*Overseas the choir has performed in France, Belgium, Germany and Italy.*

*John Keys has been Director of Music at St Mary's since 1984. In that time the artistic life of the church has bloomed in his hands and continues to evolve.*

*As well as being responsible for the provision of music for services at St Mary's, being Artistic Director of the Orchestra of the Restoration and having a heavy teaching load, he is in great demand as accompanist, continuo player and recitalist.*

# CHORAL CLASSICS FOR REMEMBRANCE

The Choir of St Mary's  
Nottingham

Directed by John Keys

*Music by Byrd, Stanford, Harris, and  
Fauré's Requiem*

"Probably the best choir in the Midlands"

PARWICH CHURCH (DE6 1QL)

SATURDAY NOVEMBER 13TH 7.30pm



Tickets including wine and refreshments

£7.50 / £1 child

from Natural Choice Ashbourne -on the door

-or phone 01335 390529 to reserve

More information, videos and audio at [www.ashbournechurches.org/concert](http://www.ashbournechurches.org/concert)

*In aid of Help for Heroes Fund and Parwich Church Restoration Fund*

## AC ELECTRICAL SERVICES

- Domestic & Farm Installations
- Rewires
- Alterations
- Additions
- Small Jobs Welcome

SCHOOL VIEW, PARWICH  
**01335 390317**

*Tess Rigby*

**Painter  
Decorator**

Fair rates, professional job  
Peace of mind  
Please call for a free quotation



Excellent references provided  
Tel 01335 348475 Mob 07846 247121  
email tessrigby@gmail.com



**Hambleton Stone  
Sales Ltd**

- Hardcore/Chatter
- Recycled/Topsoil/Planings
- Chippings inc. Decorative
- All Types of Sands and Gravels

**01335 344371 / 07974 232603**

**McMurtry & Harding  
Veterinary Surgeons**

- Consultations by appointment
- 24 Hour emergency service
- OAP discounts on weekday afternoons
- Pet behavioural clinics
- Free 'Well Pet' check-ups

*Caring for animals for over 35 years*

34 Market Place, Ashbourne 01335 342227  
8 St John St., Wirksworth 01629 823034

## *Leatherbritches Nursery*

*Fenny Bentley, Ashbourne, Derbyshire*

**Enquiries: Bill on 07713 743295 or 01335 390571**

**Open 10am - 5pm (times vary during bad weather)**

*English Plants for English Gardens*

Herbaceous, Perennial, Alpine, Shrubs, Bedding Plants, Hanging Baskets, Vegetables



## **MARSHALL (BUILDERS)**

— ESTABLISHED OVER 42 YEARS —

NEW HOUSE BUILD/ EXTENSIONS/RENOVATIONS • QUALITY STONE & BRICKWORK  
ALL TYPES OF ROOFING WORK • PLASTERING/JOINERY  
ALL TYPES OF GROUNDWORK • DRAINS • PATIOS • WALLS ETC.



**"DON'T CALL THE COWBOYS, CALL THE MARSHALLS"**

**T: 01335 390314 or 390552 or M: 07790 878348 or 07811 379782**



*I would like to congratulate Parwich and the Team who have built the new Village Hall. I was sorry I could not make the official opening but was pleased to look round on Wednesday. It is very much state of the art and I am sure the village will reap the benefit for years to come.*

*Best Wishes for the future,  
Chris Carr (Parish Representative P.D.N.P.)*

## PARWICH FILM

**In the NEW Memorial Hall  
FRIDAY 19<sup>th</sup> November 7.45PM**



Based on the book, **Letters to Juliet**, and starring the young Amanda Seyfried of *Mamma Mia* fame, and Vanessa Redgrave, this charming romantic comedy film is set in the lovely Italian city of Verona. Each year, thousands of lovelorn women flock to Verona, Italy, the hometown of Shakespeare's Juliet, to solicit romantic advice from the tragic heroine. They deposit their pleading letters on a wall near the balcony where Romeo supposedly made his famous late-night visit and, if they're lucky, receive a reply from one of Juliet's crew of officially appointed ghostwriters known as the Secretaries of Juliet. When a young American travels to the city of Verona, home of the star-crossed lover Juliet Capulet of Romeo and Juliet fame, she joins a group of volunteers who respond to letters to Juliet seeking advice about love. When she answers one letter dated 1957, she inspires its author to travel to Italy in search of her long-lost love and sets off a chain of events that will bring a love into both their lives, unlike anything they ever imagined.

Trailer on <http://letterstojuliet-movie.com/>

Web links [http://en.wikipedia.org/wiki/Letters\\_to\\_Juliet](http://en.wikipedia.org/wiki/Letters_to_Juliet)

Certificate PG

**Free Entrance. Refreshments. Raffle.**

- Silent projection
- Hi Fi Sound
- Special hi-fi headphones for those with hearing difficulties, please ask.





Based on the book, **Letters to Juliet**, and starring the young Amanda Seyfried of *Mamma Mia* fame, and Vanessa Redgrave, this charming romantic comedy film is set in the lovely Italian city of Verona. When a young American travels to the city of Verona, home of the star-crossed lover Juliet Capulet of Romeo and Juliet fame, she joins a group of volunteers who respond to letters to Juliet seeking advice about love. When she answers one letter dated 1957, she inspires its author to travel to Italy in search of her long-lost love and sets off a chain of events that will bring a love into both their lives, unlike anything

**PARWICH MEMORIAL HALL** 

***Friday 19th NOVEMBER 7.45pm***

**Free Entrance    Refreshments    Raffle**



## **GREEN LANES NEAR PARWICH**

### **Issues relating to Green Lanes near Parwich.**

The use of the Peak District landscape by 4x4s, quad bikes, trail bikes and other motorsport enthusiasts is one area that often arouses strong emotions. Concerns often centre around motorsports causing:

- Damage to the landscape
- Noise disruption to residents
- Potential safety issues for other users, like walkers or cyclists.

The National Park understands these concerns and are working with all the agencies involved to try and resolve problems that may arise. We are working on a variety of areas. Two of these are:

### **Taking action to stop the illegal use of the Peak District by motor vehicles.**

Responsibility for stopping illegal activity by motor vehicles rests with the police. We help the police by installing logging machines to monitor the number of vehicles using the land – the police can then use this information to target their resources at the busiest areas. They can take a range of action from issuing warning notices for first time offenders to confiscating vehicles for repeat offenders. Operation Blackbrook is an on-going initiative launched in April 2007 to look at complaints about ‘off road’ bikers and 4x4 drivers travelling through areas such as Taddington, Longstone Edge, Pilsley, Baslow, Eyam and Millers Dale. Although the operation has now moved into other areas where there are continuing problems. The Operation is a joint exercise with Derbyshire Police, the National Park and members of Off road and Trails Bike Organisations. The aim is to encourage motorists to:

- use lawful unsurfaced roads and byways
- understand the impact that their activities on the lives of local residents
- use peer pressure to stop the minority driving unlawfully or inconsiderately

### **Identifying areas to make improvements**

We have surveyed all 180 non-classified highways in Derbyshire to ensure that efforts to improve the condition of routes are being targeted at areas of greatest need. The condition of each route was assessed as either:

- Sustainable
- Unclear
- May be unsustainable

For each of the 23 routes that fell in the ‘may be unsustainable’ category a comprehensive management plan will be drawn up analysing all the issues involved based on reports from National Park Authority rights of way officers, conservation



officers and area rangers, Derbyshire County Council highways engineer and the Local Access Forum sub-group. The management plan will have targets for all the organisations involved to meet and the deadline for doing it by. The actions could range from putting up more warning signs, resurfacing, voluntary restraint, and temporary prohibition through to issuing a traffic regulation order that bans all traffic from the route. One of these routes is **Minninglow Lane/Gallowlow Lane, Ballidon**.

**Gallowlow Lane** , just south of Minninglow, has deteriorated in condition over the past 10 years to the extent that it was extremely difficult to walk and cycle along it, and impossible to ride a horse. Earlier in the year, the landowner kindly carried out some work on the track to remove the deep ruts. It is now in a reasonable condition, but we were concerned that this work would be destroyed over the winter months as the weather deteriorated. For this reason we approached the 4 wheel drive organisations and they agreed that there should be a temporary and voluntary restriction placed on Mininglow Lane from 1<sup>st</sup> November 2010 until 1<sup>st</sup> May 2011. The organisation will supply us with some of their voluntary restrictions signs and will work with their members to encourage people to 4 wheel drive elsewhere for the time being. Hopefully this will allow the Lane a little more time to recover and regrass. The landowners do still have access along the route in case they need to reach their fields, but hopefully use by motorised vehicles will drop off almost totally. **The route remains open to pedestrians, cyclists and horse riders.** We will reassess the route in May and in the meantime we will be monitoring use of the route by motor vehicles. We may also carry out some surfacing work on ruts across the fields over the winter months, if conditions allow.

**Green Lane, near Pikehall** was resurfaced some years ago as part of the Trails Link project joining together the High Peak and Tissington Trail. This track was previously in a similar condition to Gallowlow Lane, deeply rutted and impossible to use on a bike or horse. After the surface repairs were made, the numbers of 4 wheel drivers actually using the route declined significantly, but motorbikes still use these routes for off road journeys across the Peak District. Recently some motorbike users have been riding up this lane at high speed causing stones to flick up and hit cars parked outside houses adjacent to the lane. We have installed a vehicle logger on this route to assess the level of use and shortly we intend to install some signs just off the main highway asking users to proceed with care along the track. We hope this will remind users to consider local residents and other users and will be monitoring the situation and talking to motorcyclists on site to encourage them to drive carefully along the route. Should this fail there is the potential to include this route on an Operation Blackbrook police day.

I hope that this information will help explain why it has been necessary to erect these signs. If you would like further information relating to this matter, then please feel free to contact me on 01298 84992 or by e-mail: [lynn.burrow@peakdistrict.gov.uk](mailto:lynn.burrow@peakdistrict.gov.uk).

**Lynn Burrow, Area Ranger, Peak District National Park Authority.**

## Welcome to the Village Calendar for Alsop-en-le-Dale, Ballidon, Parwich & Pikehall

Events will be regularly updated, but we need the information.

Please email [parwich@hotmail.co.uk](mailto:parwich@hotmail.co.uk) or Jane Bennett at 1 Croft Ave, Parwich

November 2010			
Date	Time	Event	Location
Tue 2nd	7.30pm	Parish Council Meeting	Memorial Hall
Wed 3rd	6.30pm	Pilates	Memorial Hall
Fri 5th		Village Bonfire & Fireworks	
Wed 10th	6.30pm	Pilates	Memorial Hall
Fri 12th	7pm	Horticultural Society AGM & Social Evening with refreshments	Memorial Hall
Sat 13th	7.45-8.30am	Saturday Morning Bulk Rubbish Collection	Alsop
Sat 13th	7.30pm	Choral Classics for Remembrance Concert in the Church with St Mary's Choir Nottingham in aid of Church Restorations	Parwich Church
Sat 13th		Elvis Night	Parwich Legion
Sun 14th		Remembrance Day Service	Parwich Church
Wed 17th	6.30pm	Pilates	Memorial Hall
Fri 19th	7.45pm	Film Night	Memorial Hall
Sun 28th	2.30pm	Methodist Service	Parwich Church

December 2010			
Date	Time	Event	Location
Thu 9th		History Society Christmas Quiz	The Sycamore
Sat 11th		Red Devils	Parwich Legion
Mon 13th	7.30pm	Safer Neighbourhood Policing Team Meeting - all welcome	Memorial Hall
Fri 17th	7.45pm	Film Night	Memorial Hall
Fri 24th		Irish Christmas Eve with Chris Hoolie	Parwich Legion

# Thorpe

## COFFEE MORNINGS



I have been told by Julia that the coffee morning on October 13<sup>th</sup> was a most enjoyable occasion. One person was heard to say: 'It is so good to be able to talk to people one rarely sees and to learn what is going on'. Many thanks for all the generous contributions which amounted to £65.10. A cheque for this amount has been sent to the Christian Blind Mission. I have requested that it goes directly to a hospital in Malawi where the consultant Ophthalmologist performs 27 cataract operations in a day. The CBM is able to offer these people, who are very poor and travelling long distances in some cases, free transport, beds and meals, as well as a free operation. All splendid work carried out to restore sight to both young and old.

Meanwhile, Jean and I were enjoying being on the Island of Islay awaiting the arrival of Barnacle geese from Greenland, who sadly were delayed by warm weather over Iceland. They arrived eventually midweek and what a joy it was to see and hear them!

I have received an acknowledgment of sincere thanks from the *County Air Ambulance Trust* for the money they received from us (£80.27) as a result of the September coffee morning.

Future dates: Nov. 10<sup>th</sup> and Dec. 15<sup>th</sup> both Wednesdays at the usual time of 10.30 am to 12 noon in the Village Hall. On November 10<sup>th</sup>, *Traidcraft* will be present and will have a variety of goods on sale – so please come and support them. On December 15<sup>th</sup>, we shall have sherry and mince pies, as well as coffee or tea and it will be in aid of *The Salvation Army*.

RH

## HARVEST FESTIVAL – 26<sup>TH</sup> & 27<sup>TH</sup> SEPTEMBER

Our Harvest celebrations began with a joyful service of thanksgiving among an array of produce. It was followed the next evening by the **Harvest Supper and Auction**.

I think we owe a large vote of thanks to Sue and Will Smith for organising and making possible the Harvest Supper. The meal itself was excellent, thanks to the catering of Callow Hall to produce the meat pies and all those involved in the village making trifles and helping to serve the meal and wash up – again a lot of hard work involved for which we were most grateful. I think we all enjoyed a splendid evening.

Thank you, Matthew and Chris for your excellent auctioneering skills. The total amount of **£521.90** was raised by their hard work, the generosity of those present and donations from those unable to attend. Half of this amount has been sent to the *Padley Centre* in Derby which caters for the homeless, and half has been sent to *Send a Cow*. The latter charity helps thousands of families in Africa grow enough food to eat, sell their produce and develop small businesses that last. RH

## Tissington

### NOTES FROM THE HALL

NOVEMBER 2010

### Christmas Fayre at Tissington Hall 23, 24, 25 November 6.30pm-9.00pm

For the first time in its 401 year history , Tissington Hall will be opening to visitors at Christmas for a shopping extravaganza.. There will be 8 shops/providers from the village showing off their Christmas wares in the Hall over the three evenings. All will have goods available to purchase. As well as the newly appointed Sir William Bar in the Hall over the period , mulled wine , mince pies and a myriad of Christmas fayre will be on offer to visitors. Tickets costing £15 each to include all these and access to the Hall are available from the Estate Office on 352200 or email [Fiona@tissingtonhall.co.uk](mailto:Fiona@tissingtonhall.co.uk)

## **Parking in Village**

Please be aware that the County Council are about to introduce various parking restrictions in the village over the next few months. Please take heed.

## **Gift Aid at Church**

With cuts at Central Government now in place, please REMEMBER that the Chancellor **does endorse** Gift Aid to all donations to the Church and it is worth an extra 28% to all donations(if you are a tax payer). Please do encourage all to fill in the forms re this advantage.

***Sir Richard***  
**201010**

---

## **Altar Flowers**

Nov 7 & 14	Ann Etches
Nov 21 & 28	Jo Hodgkinson

---

## **TISSINGTON BONFIRE and FIREWORKS DISPLAY**

is on Thursday 4th November just off Chapel Lane in Tissington Village. The Bonfire is lit at 6.45pm and Fireworks will follow. Mulled wine, soup, hot dogs, snacks and sparklers available to purchase on the night. Everyone is welcome.

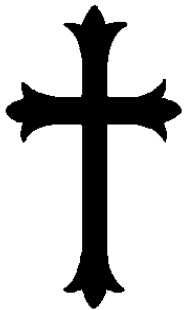


**Please do NOT put any NON-BURNABLE rubbish (ie metal etc) on the bonfire please.**



**CHRISTMAS SHOPPING EVENING AT THE BLUEBELL INN** on Thursday 18th November starting at 7.30pm. Come and purchase your Christmas presents from our various stalls. Admission is £5.00 which includes a glass of wine, nibbles and entry into our raffle on the night. Everyone is welcome, all proceeds will go to Ilam School.

---



As some of you may know, the chapel is soon to undergo a major refurbishment with a new roof, floor, windows, plus a kitchen, disabled toilet and car park, for which we are currently fundraising.

Work has not begun yet, it is hoped to start early next year and services are continuing up to present. We hold services once a month usually on the third Sunday at 2.30pm. All are welcome to come and join us for Christian worship and tea and cake afterwards. We will be having our Carol Service on 19th December at 4pm.

Starting January next year our services will be held at 10am unless stated otherwise. Come and have a look at our little chapel and see what we are doing.

Sandra Alcock

## **Contact Details**

Revd Andy Larkin  
The Vicarage  
Smithy Lane  
Parwich DE6 1QD

Tel: 07758 704452

Email: [andy@ashbournechurches.org](mailto:andy@ashbournechurches.org)

[www.ashbournechurches.org](http://www.ashbournechurches.org)

## **Readers:**

Mrs Sheena Bryden	350191
Mrs Faith Hanson	350412
Miss Ros Hunt	350221

## **Churchwardens:**

<u>St. Michael's, Alsop</u>	Mrs Caroline Gordon	390651
	Mr William Bunting	390329

<u>St. Edmund's, Fenny Bentley</u>	Vacant
	Vacant

<u>St. Peter's, Parwich</u>	Mr Martin Compton	390529
	Mrs Helen Pitts	390362

<u>St. Leonard's, Thorpe</u>	Mr Clarke Lomas	350265
	Miss Ros Hunt	350221

<u>St. Mary's, Tissington</u>	Mr David Walker	390075
	Miss Ann Unwin	350732



## Services for November to beginning of December

### Nov 7<sup>th</sup> – 3<sup>rd</sup> Sunday before Advent

Alsop		no service	
Fenny Bentley	3.30 pm	Family Service	Revd A Larkin
Parwich	11.00 am	Mattins	Revd A Larkin
Thorpe**	<b>6.30 pm</b>	Holy Communion	Revd A Larkin
Tissington	11.00 am	Family Service	Mrs S Bryden
** N.B. Change in service time			

### November 14<sup>th</sup> – Remembrance Sunday

#### *Remembrance Day Services at:*

Alsop	10.45 am		Mrs S Bryden
Fenny Bentley	no service		
Parwich	10.15 am		Revd A Larkin
	2.30 pm	Methodist Service	Mr T Parkinson
Thorpe	10.45 am		Mrs F Hanson
Tissington	9.30 am		Miss R Hunt

### November 21<sup>st</sup> – Sunday before Advent “Christ the King”

Alsop	11.15 am	Holy Communion	Revd E Urquhart
Fenny Bentley	3.30 pm	Evensong	Miss R Hunt
Parwich	10.00 am	Family Service	Revd A Larkin
Thorpe	11.00 am	Family Service + baptism	Revd A Larkin
Tissington	8.00 am	Holy Communion	Revd A Larkin
Tissington	2.30pm		Revd T Morris

### November 28<sup>th</sup> – Advent Sunday

Alsop	11.15 am	Advent Service	Mrs S Bryden
Fenny Bentley		no service	
Parwich	9.30 am	Holy Communion	Revd A Larkin
	2.30 pm	Methodist Service	Sr. M Wilde
Thorpe	11.15 am	Holy Communion	Revd A Larkin
Tissington		no service	

## **December 5<sup>th</sup> – 2<sup>nd</sup> Sunday in Advent**

Alsop		no service	
Fenny Bentley	3.30 pm	Family Service	Revd A Larkin
Parwich	11.00 am	Mattins	Revd A Larkin
Thorpe	9.30 am	Holy Communion	Revd A Larkin
Tissington	11.00 am	Family Service	Mrs S Bryden