



February 2013

27th - Fair Trade Assembly

March 2013 (So far!)

1st - Visit from local vet

5th - Spring Concert

7th - World Book Day

W/B 11th - Parwich Bake Off

15th - Ancient Egypt Day KS2

18th - INSET Day (School Closed)

20th - Mad Science Whole School
& Wizard of Oz KS2

26th - Easter Service in Church 2.30pm

28th - Twycross Zoo Miss Pendrigh
& Mrs Rodgers morning groups only

28th - Carsington Mrs Jones morning group

Check your diary!

Please ensure you check your diary and are aware of events taking place in and out of school this term, as the children are extremely busy and may require permission slips to take part or attend activities.

If children do not have a slip they will not be permitted to be part of the school activity.

First Aid Training

All children will be receiving First Aid Training through our affiliation with the British Heart Foundation 'Heartstart' project and Parwich First Responders. Thanks go to Sue Hughes for training staff and committing to this new initiative in school. The First Responders in Parwich are currently recruiting new members please see www.parwich.org for more information.

Parking/Driving

I am still receiving reports of irresponsible driving and parking from within our school community. Please can you park below the old shop and consider residents access points. Driving up to the school steps is strongly discouraged, speeding has also been reported at pick up and drop off times.

Ashbourne Police have visited school to discuss possible strategies for dealing with these problems. I will be looking for a working party to assist with devising an action plan for future consultation.

Parwich Bake Off



Children are invited to take part in the

Parwich Bake Off in aid of Comic Relief 'Red Nose Day'

Starting on Wednesday 13th March. Children will be split into 3 categories: Reception /Year 1, Year 2 & 3, Year 4, 5 & 6

Younger children will decorate a biscuit using the ingredients provided by school, whereas older children must choose a recipe bake a cake or biscuit and decorate it in school before presenting it to the judges. The winner will be crowned Master Baker for each category!

Thank You!

I'd like to thank Parwich United Charities and Parwich Independent Welfare Fund for their generous and much appreciated donations to school. Both donations have been used to purchase Dyslexia specific resources and support the continuing work of our Eco-Committee.

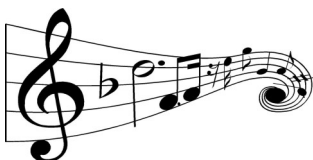


Headlice

They're back, that's if they ever left! We currently have reports of little visitors across all classes. Please check you child's hair and treat appropriately.

Music Lessons

Mrs Barkley-Smith's lessons are moving to Tuesday afternoon. If your child doesn't already receive lessons and would like to study the piano or violin, please email school with your request.



School Concert

The new date and venue of the concert is Tuesday 5th March in the Memorial Hall. Tickets will go on sale next week as places will be limited due to space. Donations are being sought for a raffle to be held on the evening of the concert if you would like to donate any prizes please send into school by Friday 1st March for the attention of Mrs Rodgers.

Thank you for your support.