

Biodiversity in Parwich 2025

September 24 - Given record takings from Open Gardens and the Society interest in promoting healthy gardens and biodiversity, we agreed to explore how to promote this in Parwich.

November '24 – we agreed to pursue a “Diversity in our gardens” project, which could engage members, the school and other interested residents, with support from Derbyshire Wildlife Trust. We invited the Parish Council to participate by getting advice from DWT on some of their land, and on 20/11 they agreed to a survey being done.

December '24 we were awarded £2,000 from the DWT Community Fund for the survey and an event, and in January '25 our AGM agreed another £1,000 for the project.

27th April – Birds, Bees and Butterflies day



BIRDS, BEES & BUTTERFLIES

- bringing life into your garden

Join us for a FREE afternoon of activities on

Sunday 27th April

2pm to 4pm at the Memorial Hall

The programme includes:

Short talk by Derbyshire Wildlife Trust

Planting for pollinators - sow seeds the bees and butterflies will love

Pond in a pot - make your own mini-pond

Feed the birds - make your own bird feeder

Seeds, plants, pots and everything you need provided

Information on how to recognise and monitor birds, bats and other creatures in your garden

HOT DRINKS AND HOME-MADE CAKE PROVIDED



Eleven people signed up to our pledge:



**WILL YOU JOIN US IN TRYING TO
CREATE MORE WILDLIFE FRIENDLY
GARDENS IN PARWICH?**

Will you make a pledge to do one or more of these five things in your garden this year?

- Grow more pollinator-friendly flowers and shrubs all year round
- Leave a corner of your garden untidy and undisturbed with weeds, leaves and sticks
- Stop using pesticides and weedkillers
- Add a water feature
- Put out food, water and nest boxes for birds



If you would like to sign up to the pledge, or find out more, speak with one of the committee or email

parwichhorticultural@gmail.com



20th May Derbyshire Wildlife Trust completed the ecological survey of Jubilee Pond, Pump Hill and Millennium Green.

22nd June – Open Gardens made a feature of gardening for wildlife, with signs at most gardens and an information display.

BIRDS, BEES & BUTTERFLIES

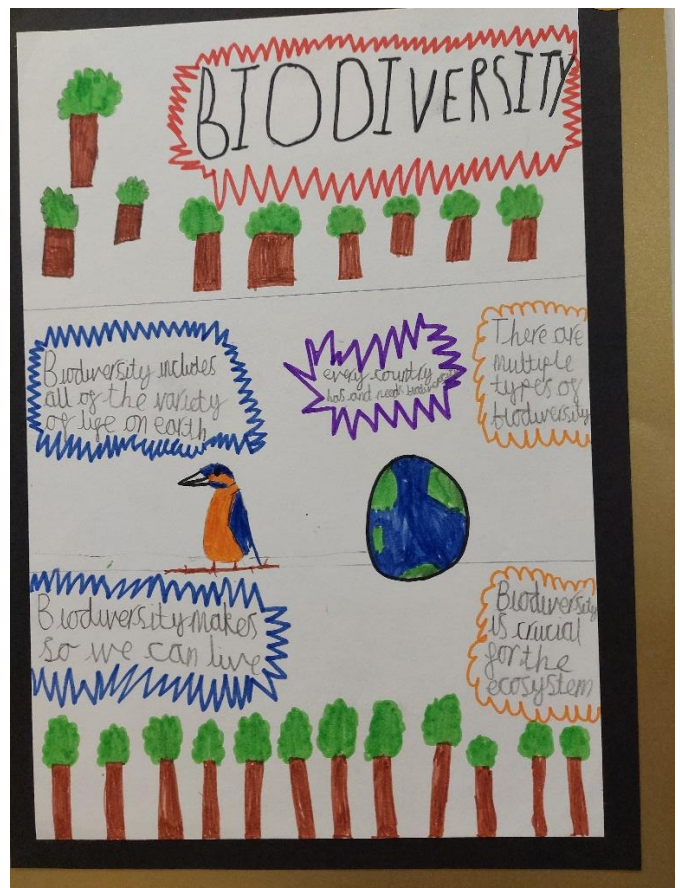
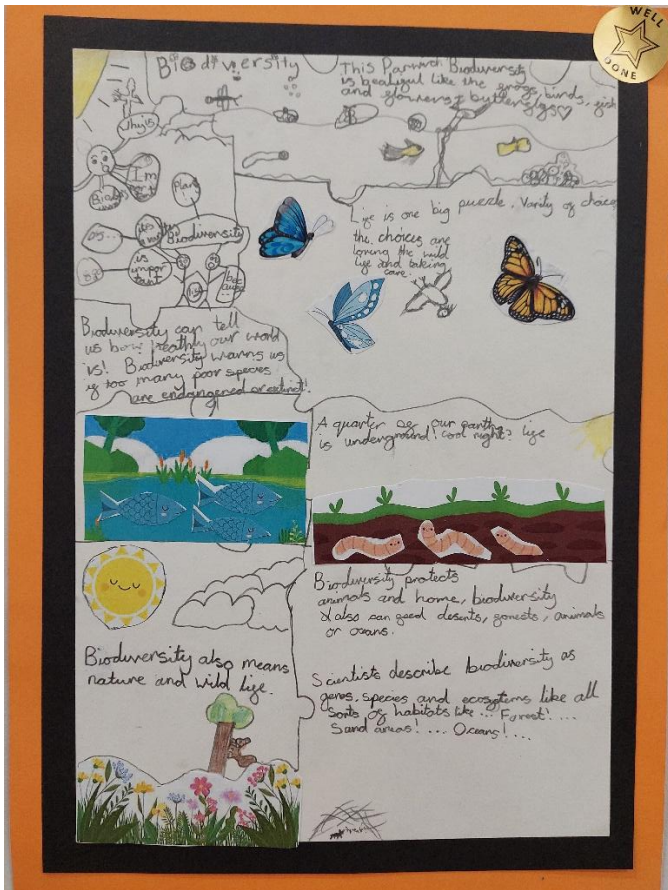
- promoting biodiversity in our gardens

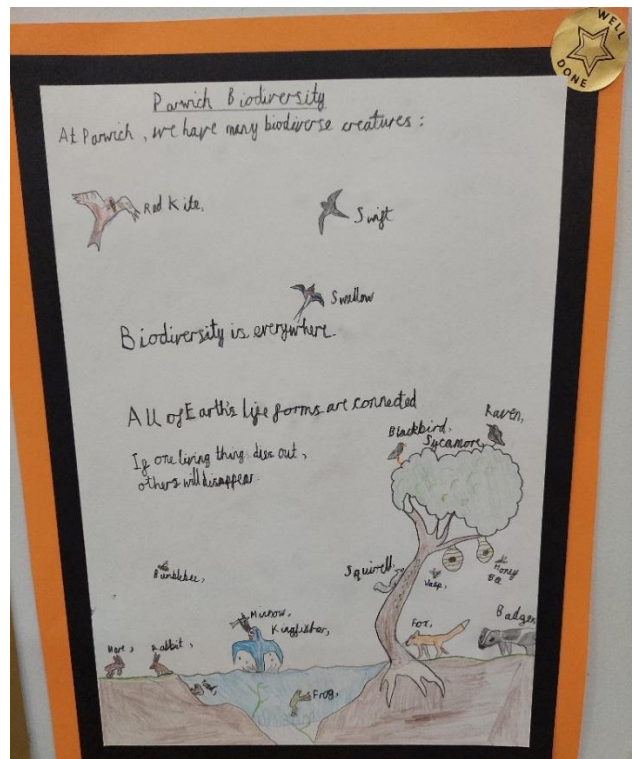
In Wheatsheaf Cottage garden we have:

- flowers for pollinators
- water features as habitat, bird bath and water source
- hedgehog passageways and boxes - well used!
- log pile and bug hotel
- nest boxes and bird feeders
- no pesticides used - garlic spray as an alternative



At the end of term the school set the children a project of producing a poster about Biodiversity, which were entered into the Village Show.





In July we invited people in the village to take part in a wildlife survey and received over 10 responses



On 8th August we held a Bat walk and talk, and we subsequently bought a bat detector to loan out to members.



BANGERS AND BATS!

Friday 8th August

Find out more about these fascinating creatures who share our village

From 7.30pm Bangers at the Legion
8.30pm Short talk by Derbyshire Wildlife Trust at the Memorial Hall
9.00pm Guided walk around the village with bat detectors

Bangers £3.50, walk and talk free of charge





Garden trip Naturescape Wildflower Farm and Norwell Nursery Wed 9th July

Our annual trip was to a nearby wildflower farm, where participants could see wildflower seed being produced and gardens full of wildlife friendly features, as well as an opportunity to buy the plants and seeds.

The second garden was a great example of drought tolerant plants, full of flower and alive with pollinators.

Naturescape Wildlife Garden, near Nottingham, is about 3 acres in size, with a further 40 acres of wildflower fields on site which are crops grown for seed production.

Their shop offers approximately 200 different species of native wildflowers and there are herbs, cottage garden plants, roses and climbers available. Tea room for refreshments.

Norwell Nursery at Newark specialise in rare and unusual herbaceous perennials as well as Cottage Garden Plants. All are grown in the inspirational gardens and we have a tour booked in the afternoon, followed by tea and cake.

September to November – we were finally able to share the DWT survey of the three sites in the village. The recommendations generated a lot of debate amongst residents but after the third Parish Council meeting, they accepted most of the recommendations for the Pump Hill woodland and Millennium Green, though sadly deciding to dredge the village pond.

We now have the go-ahead to add suitable shrubs and flowers to both sites and to work with the Council to engage volunteers and the mowing contractor to maintain both in ways to promote biodiversity.



BIRDS, BEES & BUTTERFLIES

SPECIES
SURVIVAL
FUND

Funded by UK Government Heritage Fund

As well as looking at our own gardens, PDHS secured agreement from the Parish Council and funding for Derbyshire Wildlife Trust to survey three sites in the village. Completed last May, they have now written a report describing the biodiversity at these sites with advice to the Council for their maintenance and development. Even small areas like these are important to offset the serious decline in wildlife locally.

We have asked the Council to consider this advice and take the opportunity to increase the number of flowering plants and habitats, which will help to support local animal populations, whilst still maintaining these spots as attractive areas for residents to enjoy.

Basically – more flowers – more birds, bees and butterflies!

Proposals in a nutshell:

Jubilee Pond

Keep the course of the stream clear at all times and allow native plants to grow on the banks and in the shallow areas. Dominant plants will need to be regularly removed to stop them taking over.

This will be great for the fish, newts and toads who use the pond as well as a huge range of insects – and the animals who feed on them such as bats, owls and other birds. DWT say this is a really important spot, and there will be lots for people to look at and enjoy.

Millennium Green

Allow the grass to grow just a little longer so the daisies, speedwell, celandine etc can flower. Re-seed some areas with wildflowers to grow taller, flower and set seed, around the edges or with paths between. Replace invasive non-native shrubs with native shrubs and plants to flower and fruit on the slope and edges.

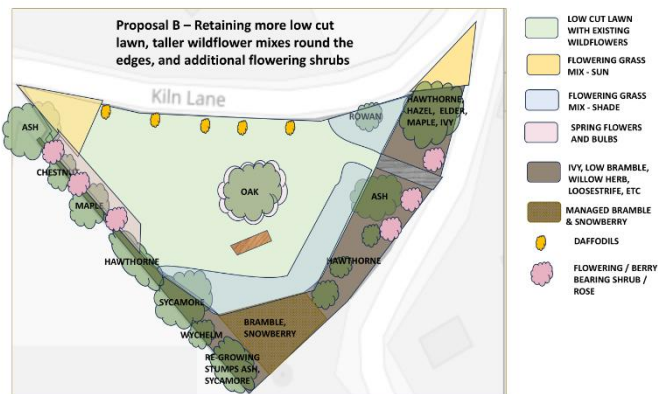
This will look really pretty, be accessible for people to walk, sit and admire the view and be great for pollinators and lots of other animals.

Pump Hill

Replace the few invasive non-native plants with native alternatives. Cut back dominant plants like nettles and brambles at least annually to prevent them taking over. Manage the trees so enough light continues to reach the ground, and keep the paths and seating areas clear.

This will keep an open mixed woodland space which is a great environment for lots of species and accessible for people to wander through.





Low cut lawn –
mow every two
weeks to 2", skip
one or two cuts
May / June.
Remove clippings.



Sunny flowering
grass mix



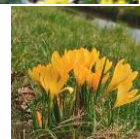
Strim and remove
once in September
then mow every
two weeks



Shady flowering
grass mix with
English bluebells



PLANTS AND MAINTENANCE



Shrubs – dog rose,
Guelder rose,
Blackthorn – no
maintenance – cut
back only if necs



Spring flowering
bulbs – no
maintenance



Brambles and
snowberry – cut back
every 2 or 3 years in
front of bench to keep
the view



Next year we plan to continue the project, with talks and workshops on gardening for wildlife, as well as explaining and promoting the changes to Pump Hill and Millennium Green.